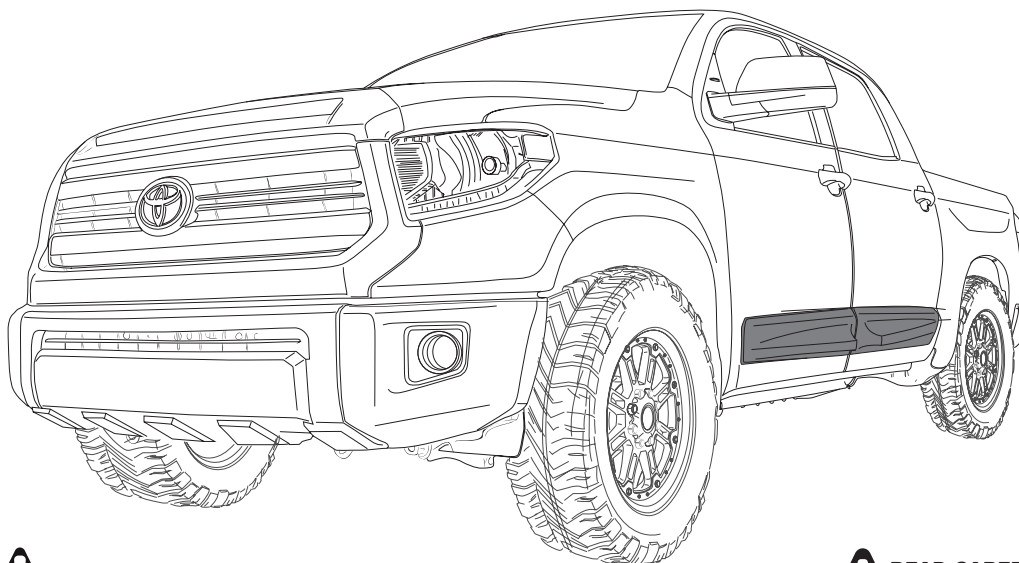


INSTALLATION MANUAL

DOOR ROCKER PANEL SET TUNDRA 2015 CREWMAX

PART # : 1124NNEJTO01D05



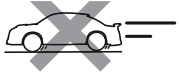
**DO NOT
WASH CAR**



24 hrs



**DRIVE SLOWLY
25 mph max**



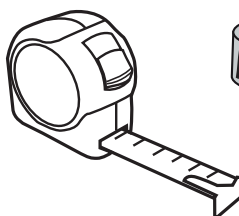
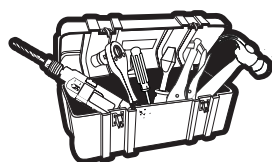
**READ CAREFULLY BEFORE
INSTALLATION**



We recommend 2 persons for installation







TOOLS



CHECK LIST

*Already installed in the part

ITEM	DESCRIPTION	DRAWING	AMOUNT
A	* VHB TAPE		Included in the parts
B	GREASE PENCIL		1 pc
C	ADHESION PROMOTER		1 pc
D	ECO DOME		1 pc

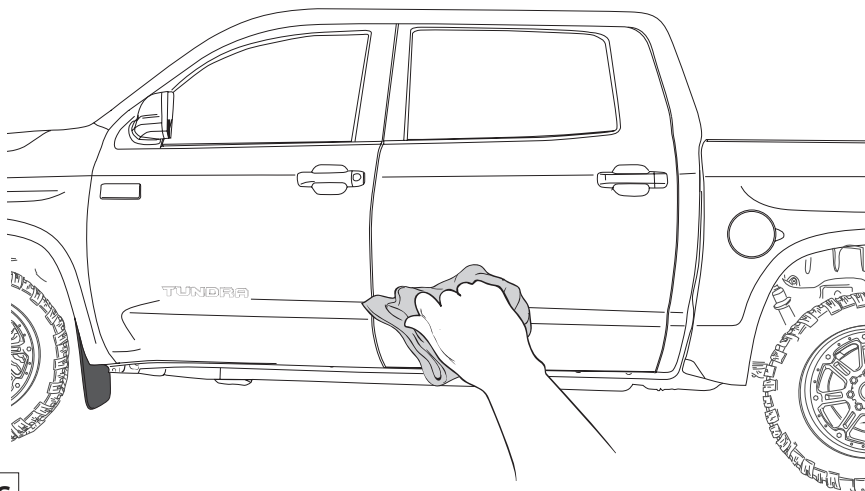
INSTALLATION MANUAL

FRONT & REAR ROCKER PANEL

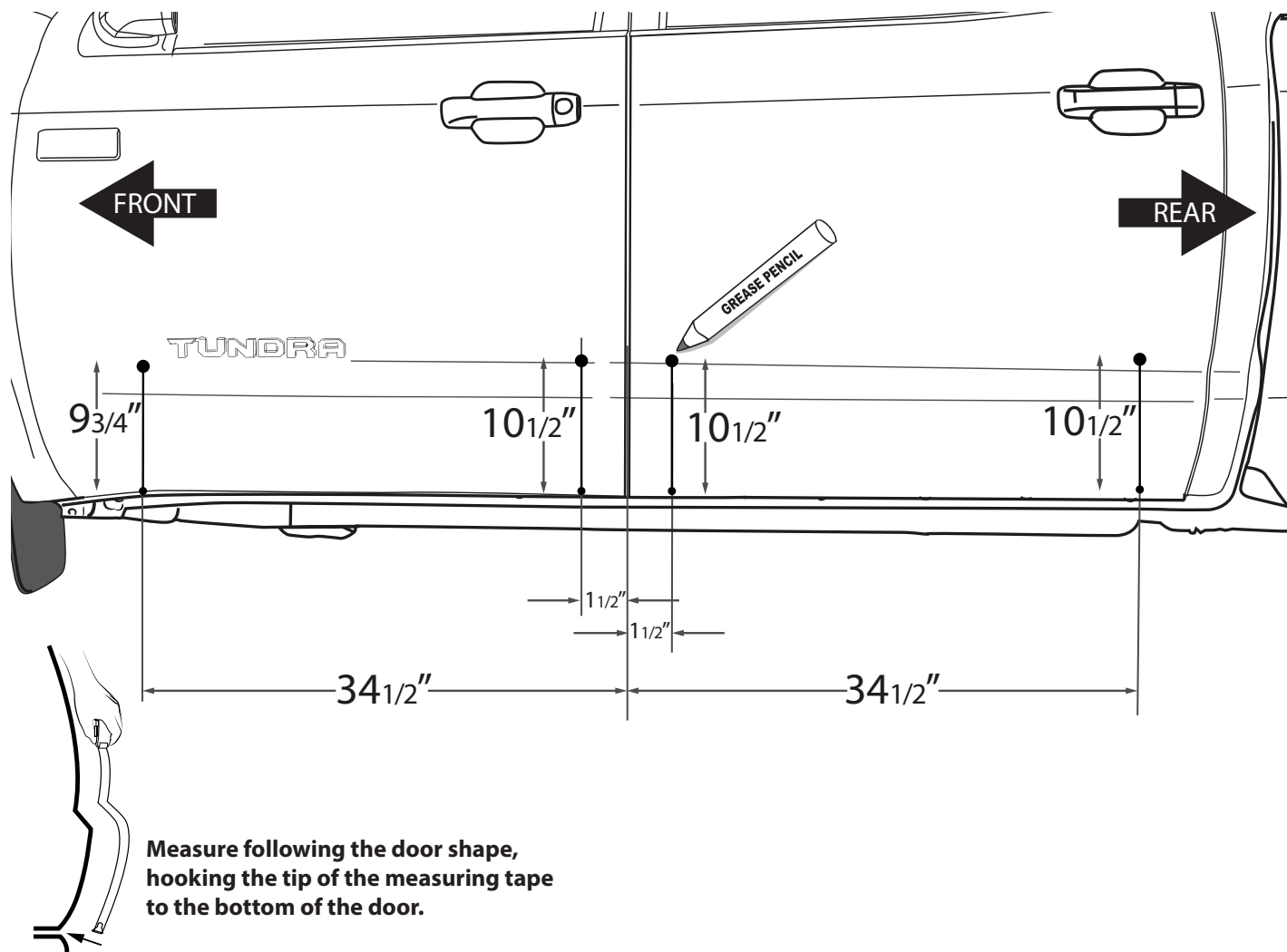
**! WASH WITH WATER, DETERGENT AND
SOFT CLOTH OR SPONGE**

1 CLEAN

**FACTORY DOOR MOLDING HAVE
TO BE REMOVED BEFORE
INSTALLING DOOR ROCKER PANEL**

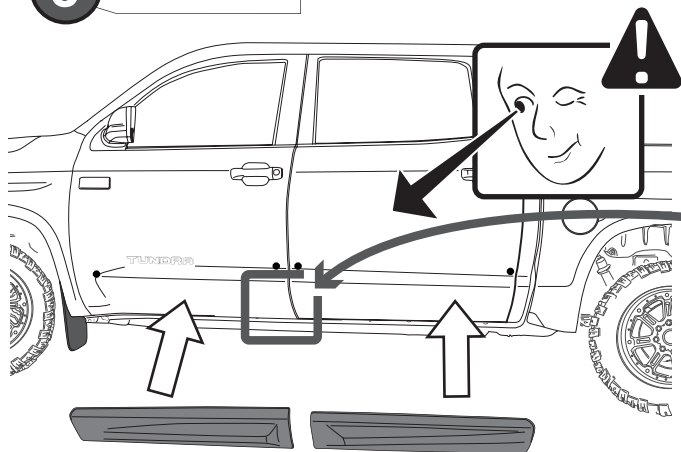


2 LOCATE REFERENCE POINTS

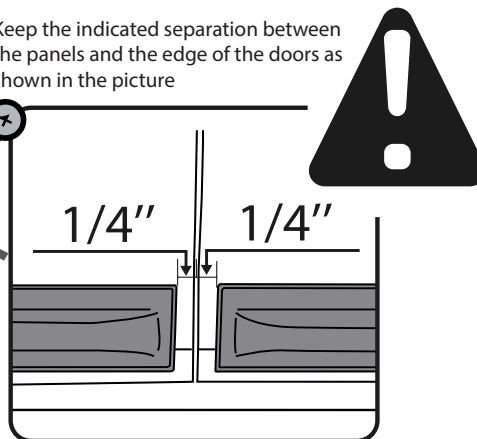


INSTALLATION MANUAL

3 PRE-MOUNT

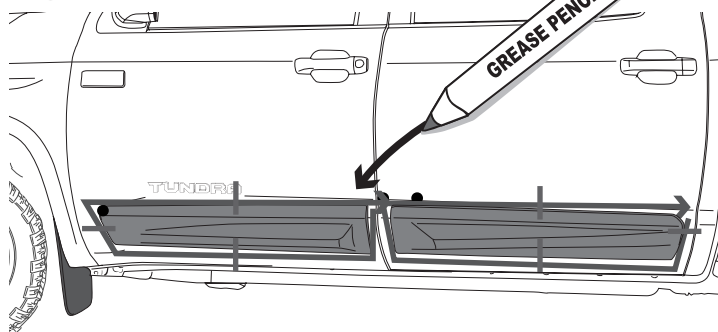


Keep the indicated separation between the panels and the edge of the doors as shown in the picture



4 MARK

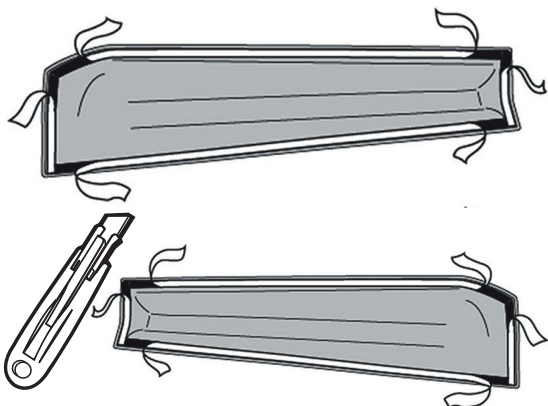
! HASH MARKS



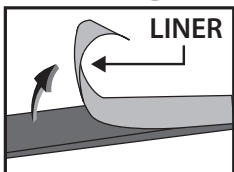
DRAW CENTER HASH MARK WITH GREASE PENCIL ON PANELS AND SHEET METAL, THIS WILL ENSURE PANELS WILL BE CENTERED TO GREASE PENCIL OUTLINE.

6 PEEL

! WARM SURFACES WITH HEAT GUN IF SURFACE TEMPERATURE IS TOO COLD.



PEEL OFF



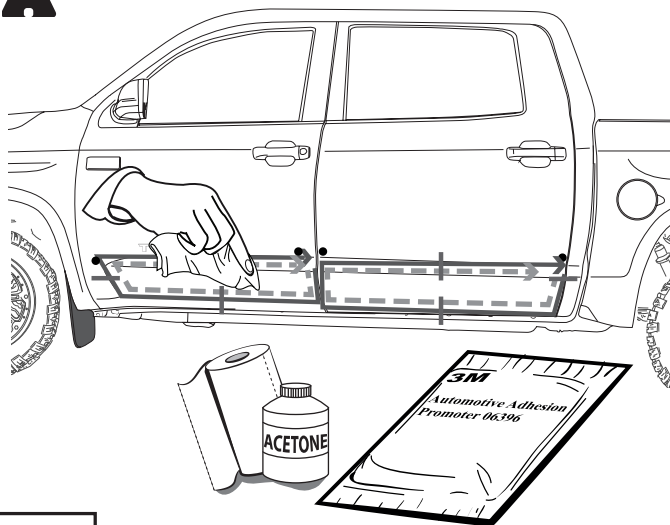
Hold the liner out

5

ADHESION PROMOTER



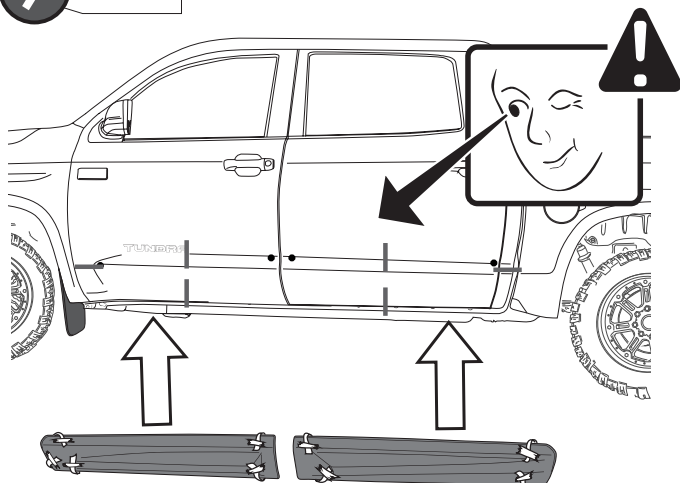
FIRST CLEAN ALL OVER THE APPLICATION AREA WITH ACETONE



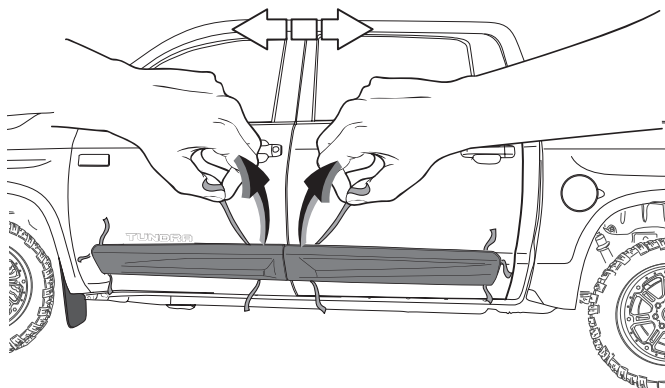
A full surface contact between tape and substrate is decisive for good adhesion performance. Contact is achieved by applying pressure. In practice a pressure between 40 and 50 N/cm² is usually needed and an application temperature between 25 and 45 °C or 77 and 113 °F is also necessary. During application, add-on parts and tapes must have the similar temperature.

INSTALLATION MANUAL

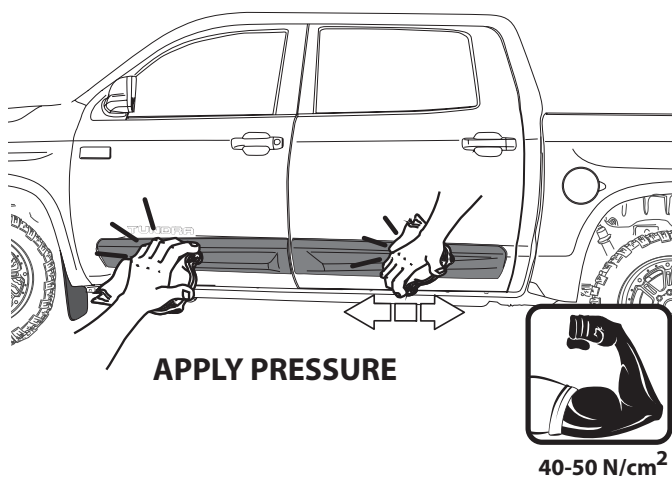
7 PLACE



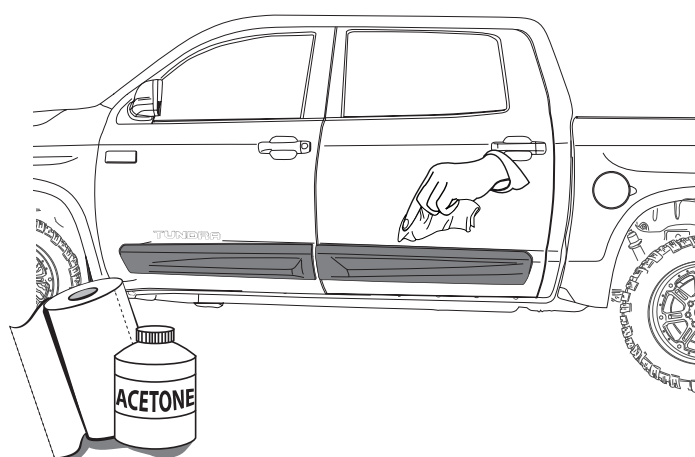
8 REMOVE LINER



9 PRESS



10 CLEAN OFF GREASE PENCIL MARK



INSTALLED PARTS

